

 Genuine Accessories

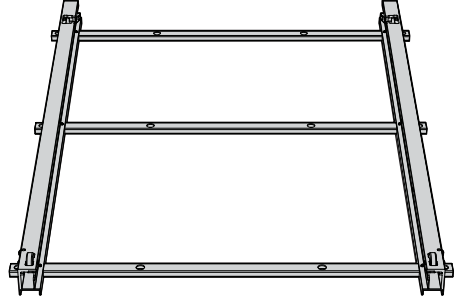
# TK1 Sliding Cargo Bed

Installation Manual

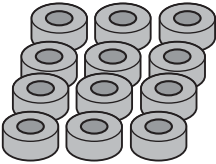
# Parts List



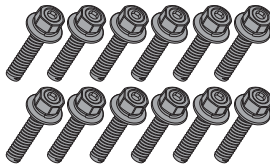
Sliding Cargo Bed  
(1EA)



Rail  
(1EA)



Bushing  
(12EA)



M8x45 Bolt  
(12EA)



Pop Nut  
(12EA)



Hole Cap  
(2EA)



Installation Manual

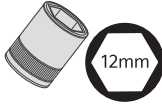
# Installation tool



Ratchet



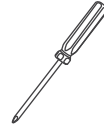
Connecting Tool



Socket (12mm)



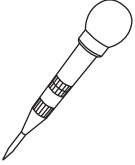
Torx Wrench (TORX 40)



Driver (+)



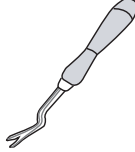
Deburring Tool



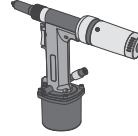
Center Punch



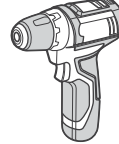
Torque Wrench



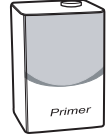
Clip Remover



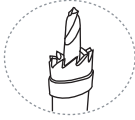
Pop Nut Gun



Electric Drill



Paint Primer



Hole Saw (36mm)



Drill Tip (3mm), (11mm)



Air Gun, Vacuum



Touch-Up Paint



Clean Gloves



Goggle

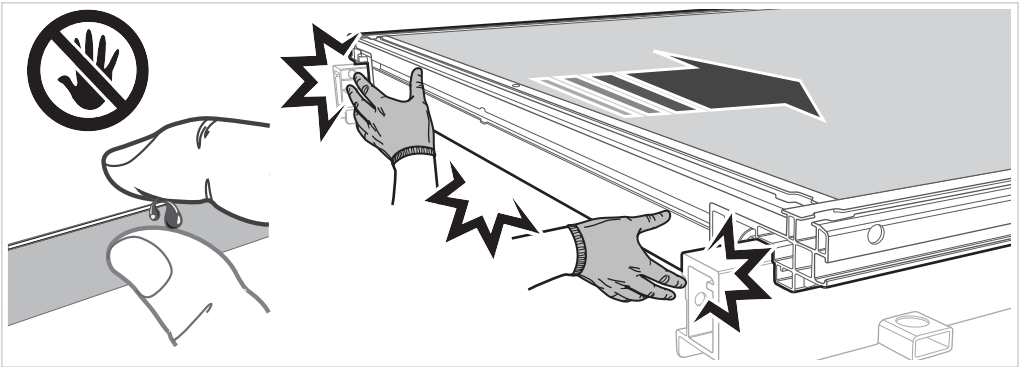


Safety Shoes



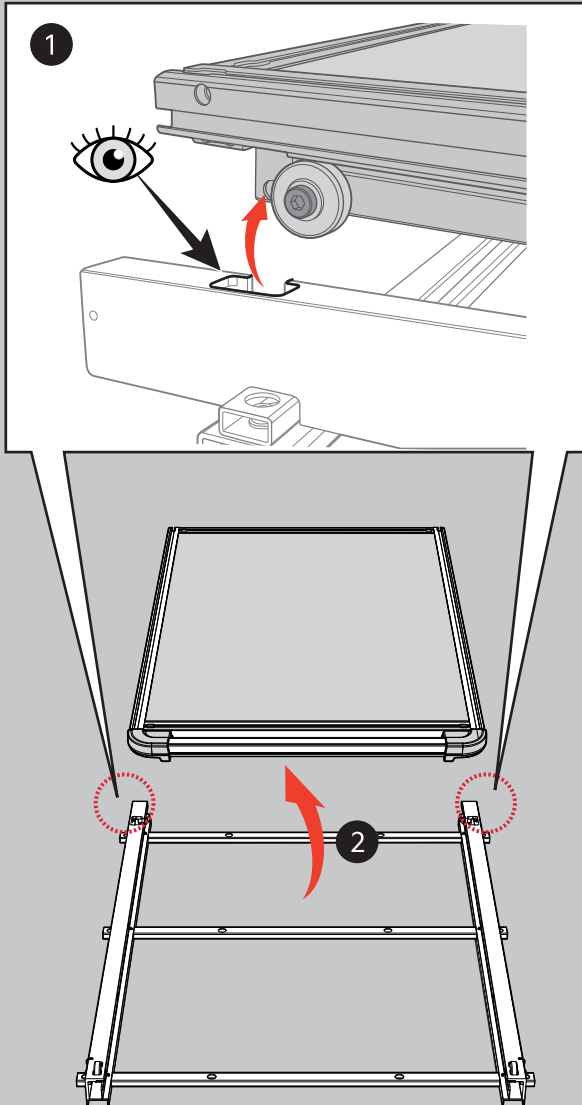
Caution

## ※ Precautions for Installing Sliding Cargo Bed

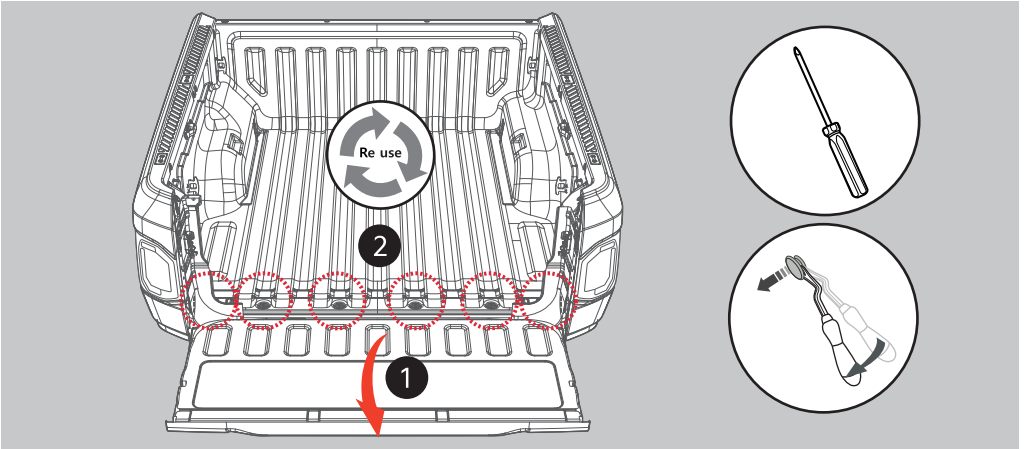


- ※ Please proceed with the installation work in pairs.
- ※ When opening/decomposing the 'Sliding Cargo Bed', be careful of hand jamming during sliding operation.
- ※ Please pay special attention to physical injuries when handling 'Sliding Cargo Bed'.
- ※ Be sure to read and understand the precautions for use of the 'Sliding Cargo Bed'.
- ※ The manufacturer is not responsible for accidents, physical injuries, damage to the product, or financial loss in case of failure to comply with installation and precautions for use.

# Installation



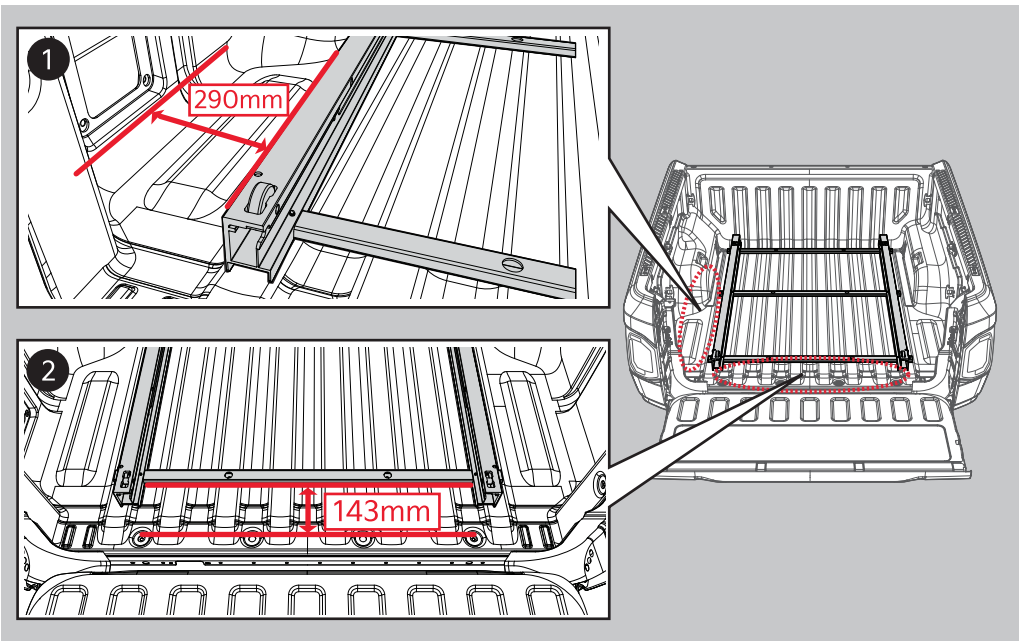
1. Separate the rail from the sliding cargo bed by aligning the bearing of the sliding cargo bed with the rear hole of the rail.



2-1. Please open the tailgate.

2-2. Remove the plastic retainer fastened to the bed liner using the clip remover and driver (+).

※ Please note that the removed plastic retainer will be reused.

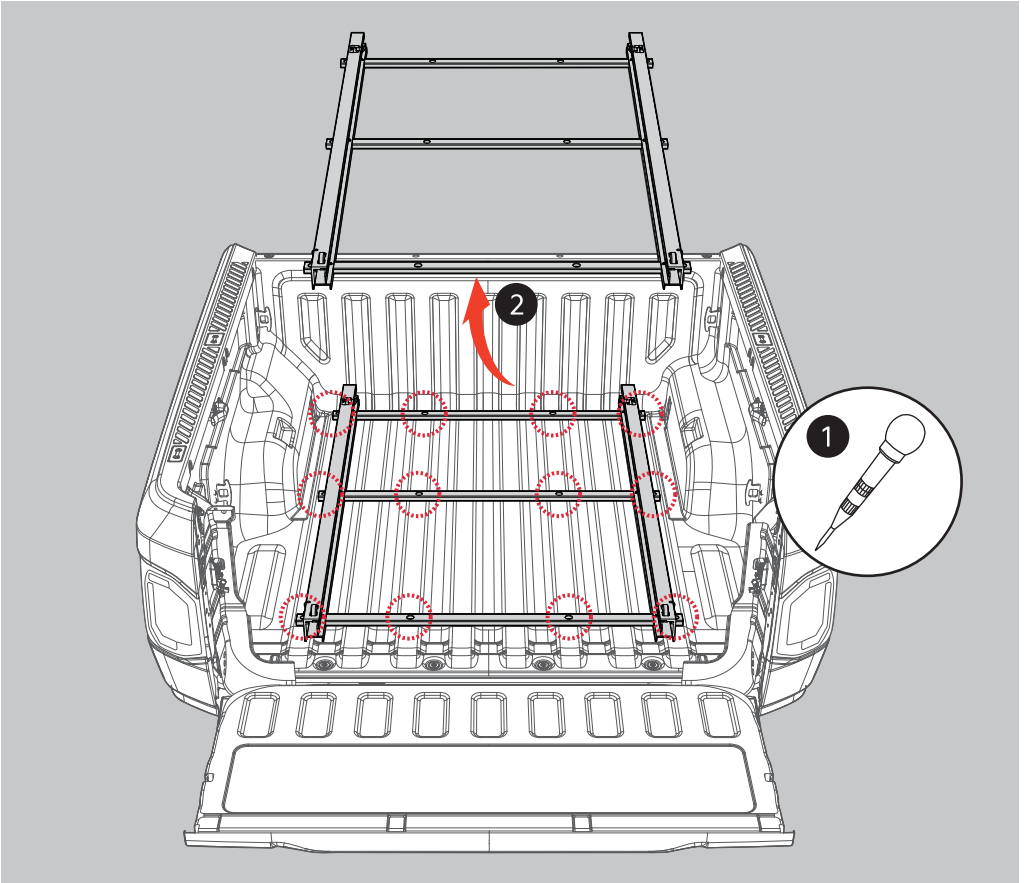


3. Position the rail on the bed liner.

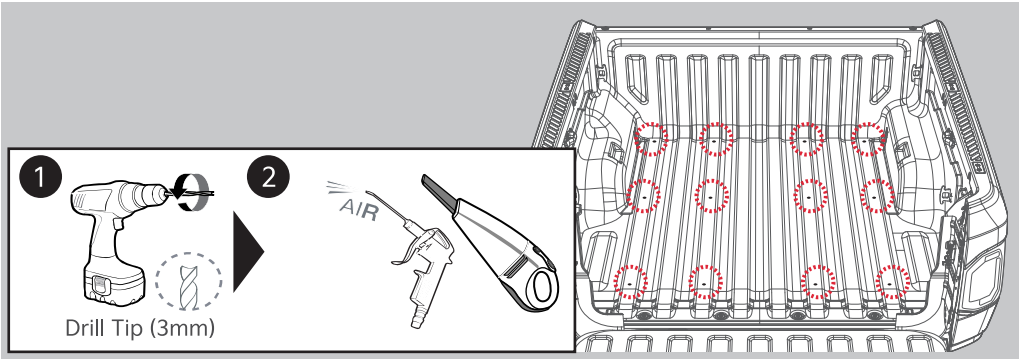
※ Position the rail 290mm away from the bed liner side reference.

※ Position the rail 143 mm from the end of the plastic retainer removal hole.

※ Position the rail correctly in the center of the vehicle as indicated.



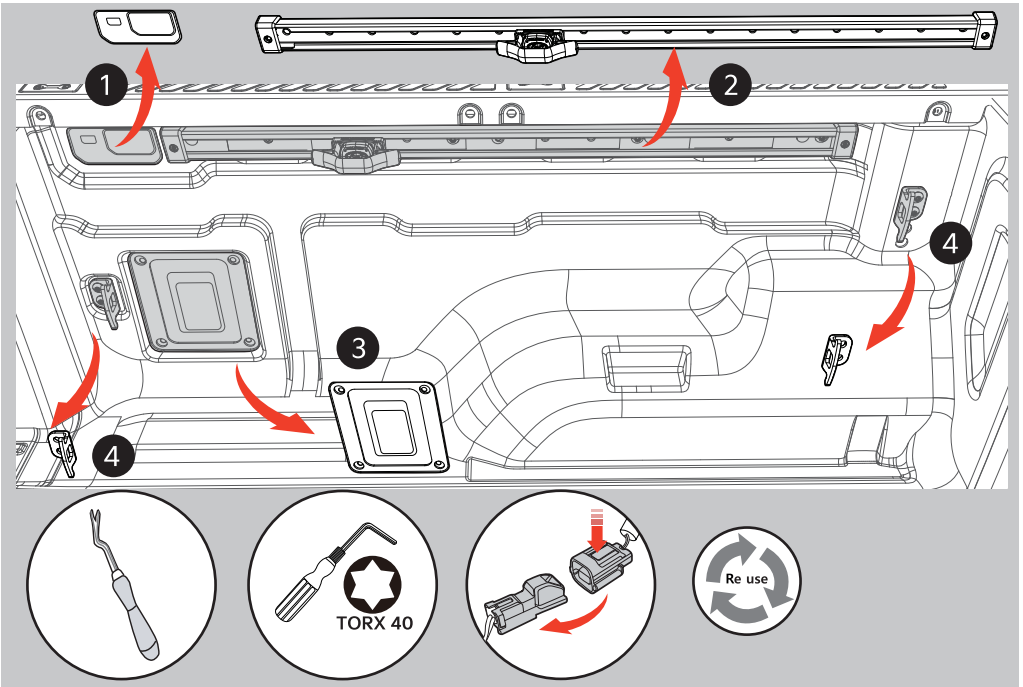
- 4-1. Mark the bed liner with a center punch in the center of the 12 holes on the rail.
- 4-2. Please remove the rail.



5-1. Use drill tip (3mm) for 12 marked holes to process holes in bed liner and panel.

※ When processing the hole, work carefully so that the maximum depth does not exceed 10mm.

5-2. Remove the air conditions and cleaning devices to remove remaining water from the drill hole.



6-1. Remove the lamp case mounted in the direction of the bed liner LH using a clip remover.

※ Please disconnect the adapter.

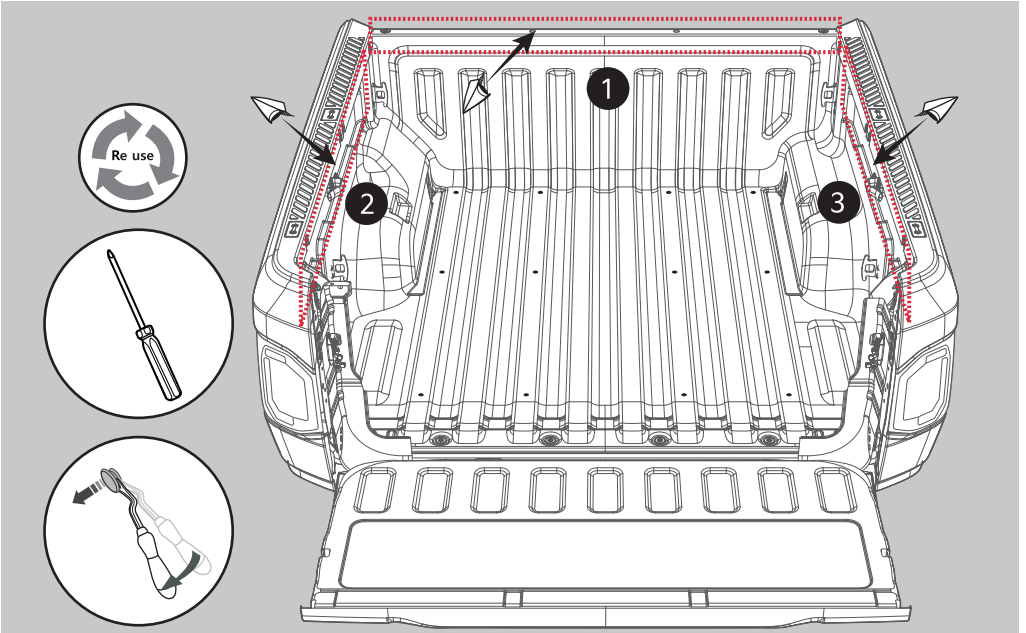
6-2. Remove the side rail installed in the direction of the bed liner LH using the Torx wrench.

6-3. Remove the adapter case mounted in the direction of the bed liner LH using a Torx wrench.

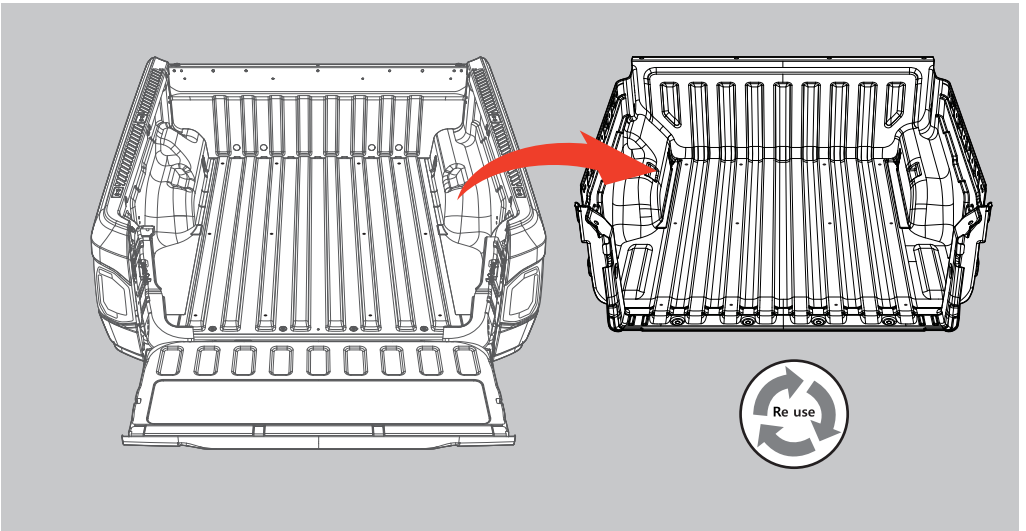
※ Please disconnect the adapter.

6-4. Remove the fixed ring attached to the direction of the bedliner LH using a Torx wrench.

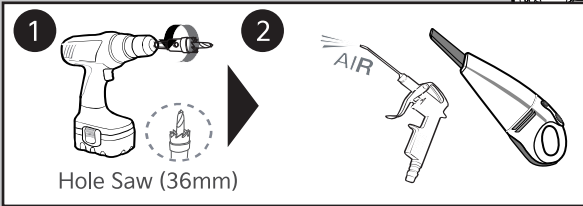
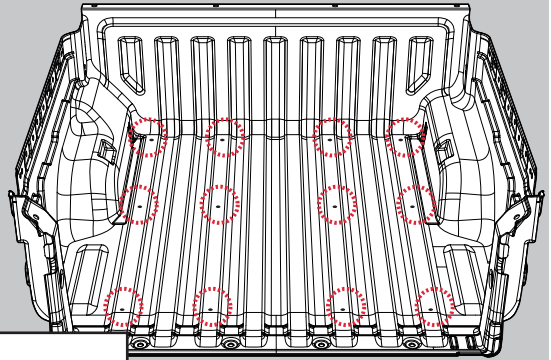
6-5. Please work in the same process for RH passenger direction.



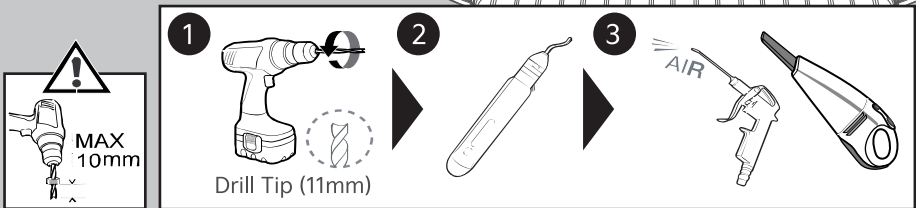
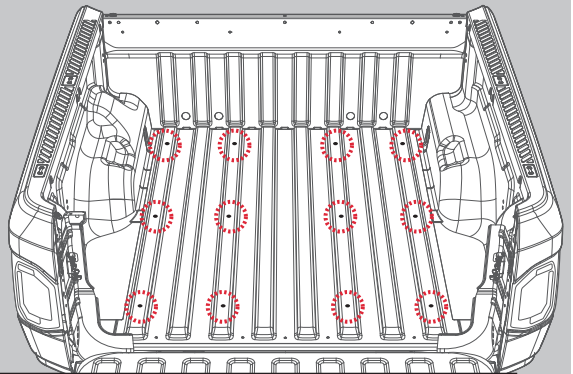
7. Remove the retainer fastened to the bed liner using the clip remover and driver (+).  
※ Please note that the removed plastic retainer will be reused.



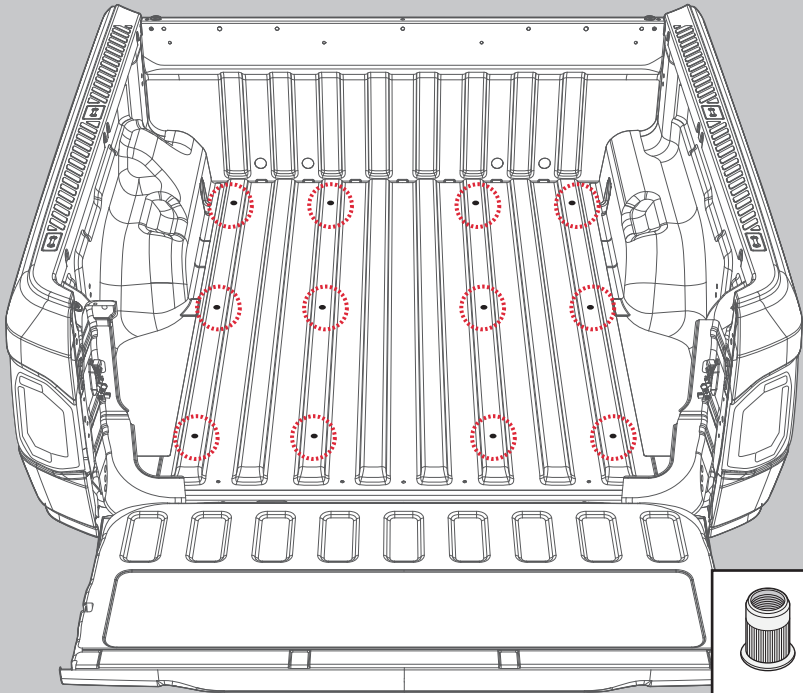
8. Remove the bed liner.



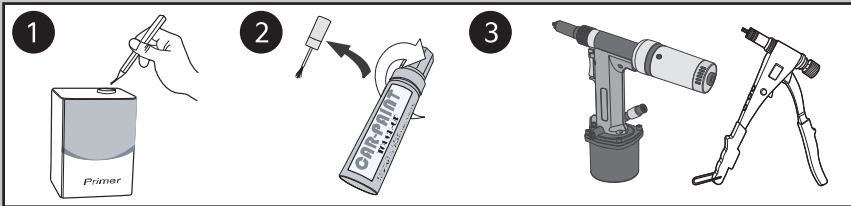
- 9-1. Use a hole saw (36mm) to make holes in the 12 processed holes of the bed liner.  
 9-2. Remove with an air gun and a vacuum cleaner to avoid leaving any residue in the drill hole that has been expanded.



- 10-1. Use drill tips (11mm) to drill holes in the 12 panels of the processed vehicle.  
 ※ When expanding the hole, work carefully so that the maximum depth does not exceed 10mm.  
 10-2. Use the deburring tool to evenly work the sharp side around the drill hole.  
 10-3. Use an air gun and vacuum cleaner to remove any residue from the drill hole that has been expanded.



X 12EA



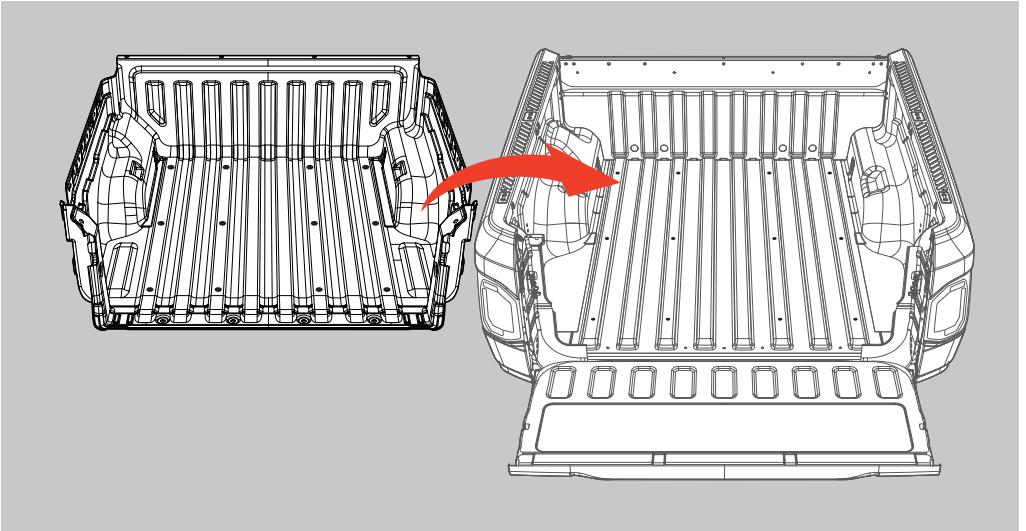
11-1. Apply paint primer to the 12 holes that have been processed.

※ After the applied paint primer is completely dry, work on the following process.

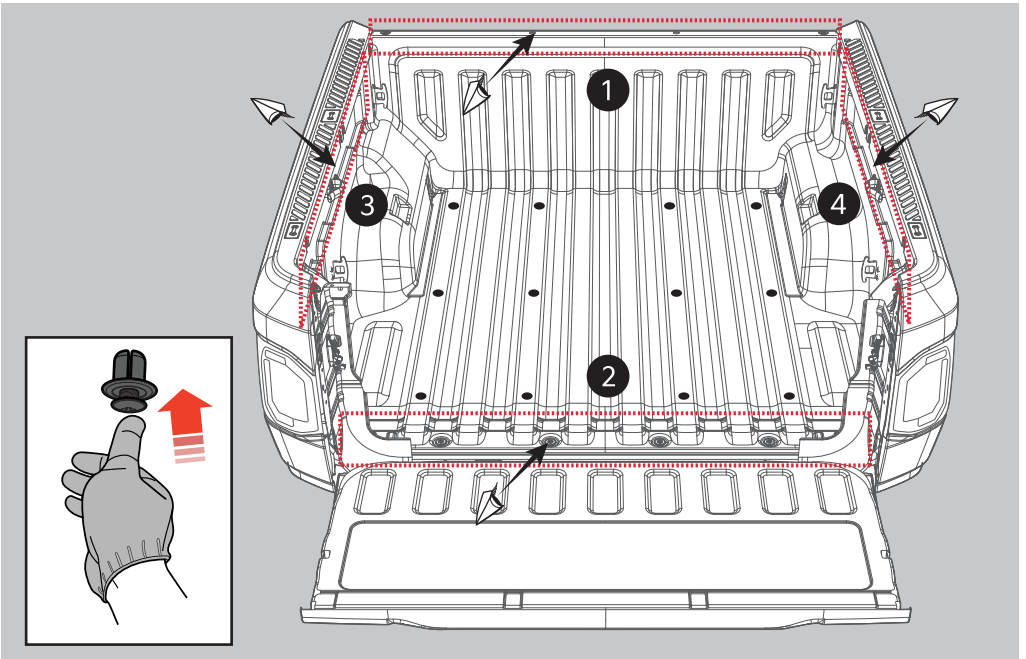
11-2. Apply touch-up paint to the 12 holes where the paint primer has been applied.

※ After the applied touch-up paint is completely dry, work on the following process.

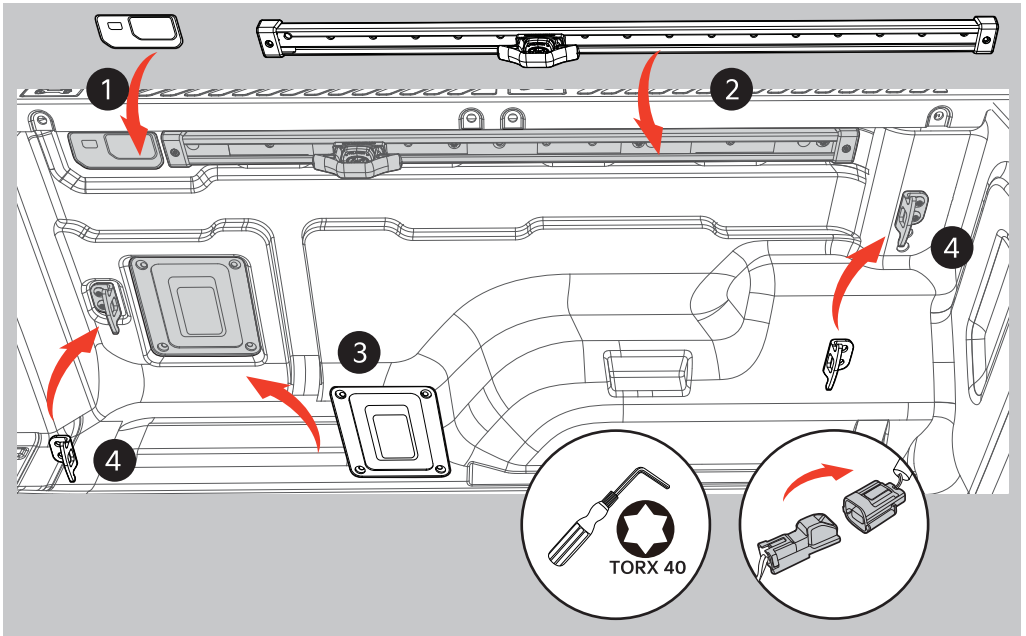
11-3. Insert the pop nut using the pop nut gun into the 12 holes where the touch-up paint is applied.



12. Position the bed liner on the panel of the vehicle.



13. Using a plastic retainer, fasten the bed liner to the panel of the vehicle.



14-1. Please install the lamp case in the direction of the bed liner LH.

※ Please attach the adapter.

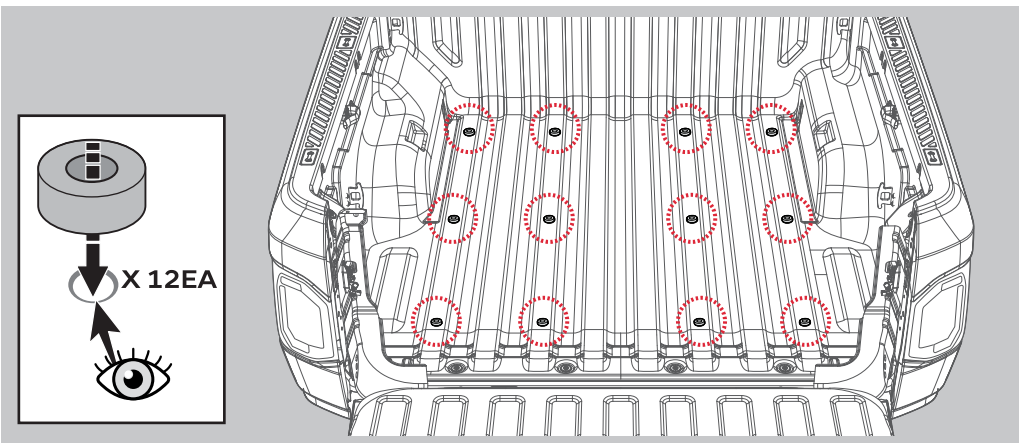
14-2. Install the side rail in the direction of the bed liner LH using a Torx wrench.

14-3. Install the adapter case in the direction of the bed liner LH using a Torx wrench.

※ Please attach the adapter.

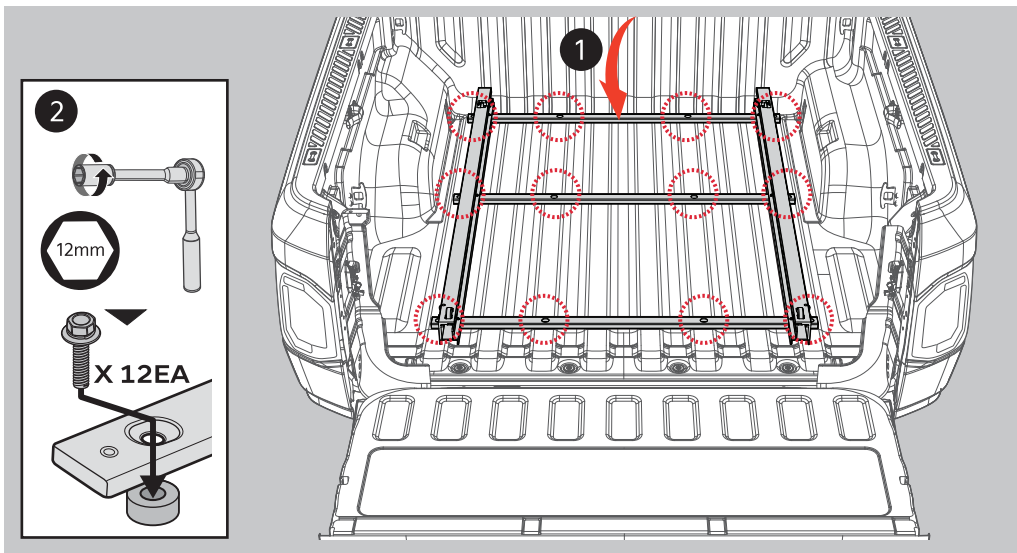
14-4. Install the fixing ring in the direction of the bed liner LH using a Torx wrench.

14-5. Please work in the same process for RH passenger direction.



15. Please align 12 bushing to the 12 hole machining positions of the bed liner.

※ Please note that the bushing is lost or misplaced.

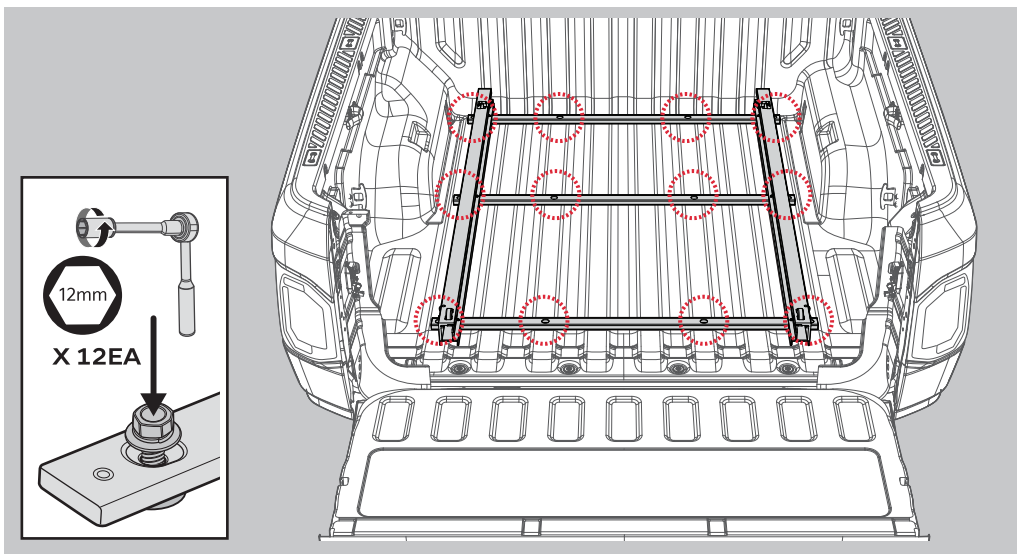


16-1. Raise the rail to the top of the bushing.

16-2. Put the M8x45 bolt into the 12 holes of the rail.

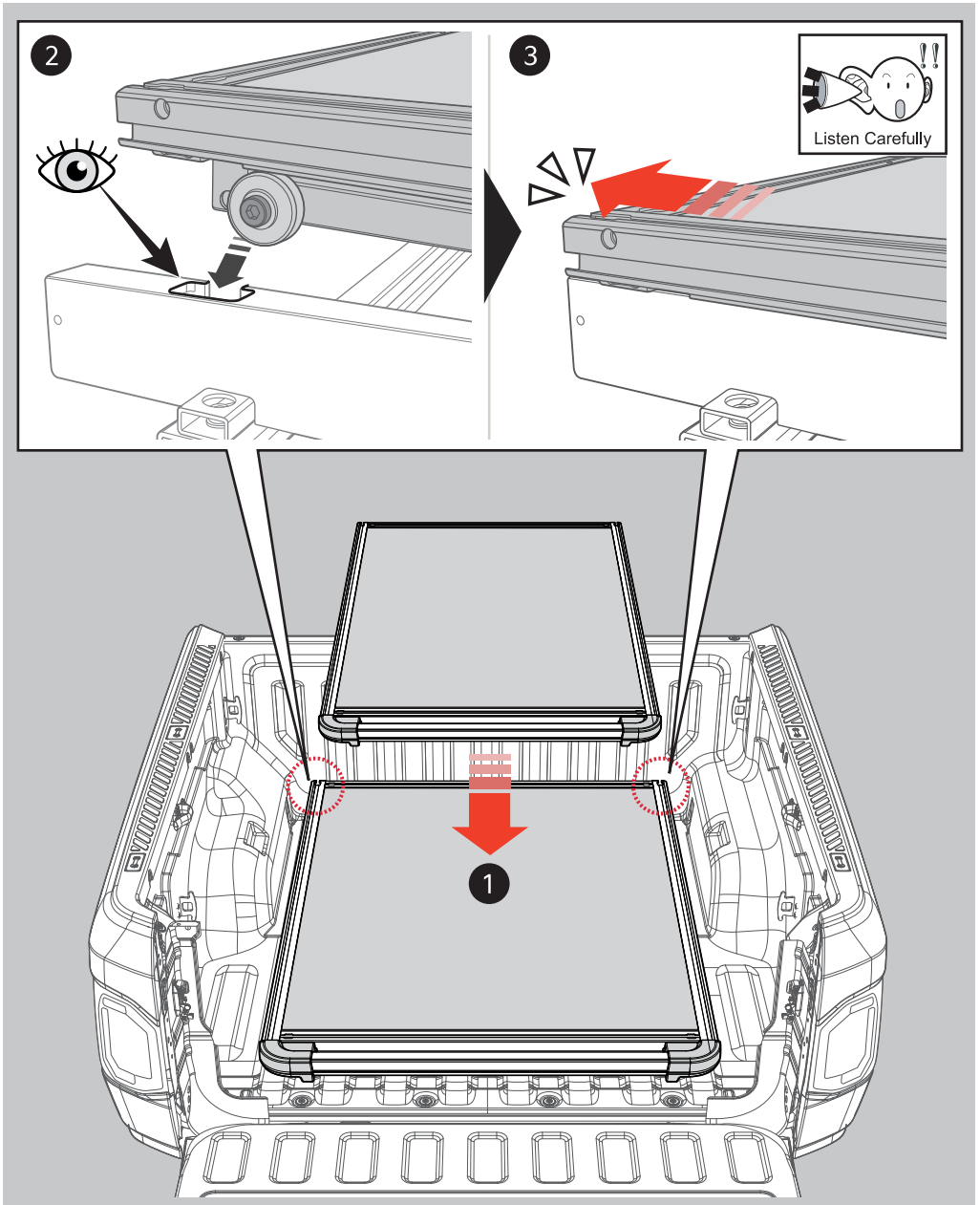
※ Make sure to match the bushing hole when fastening the M8x45 bolt.

※ Make sure that the rails are not too loose.



17. Completely fasten 12 M8x45 bolts.

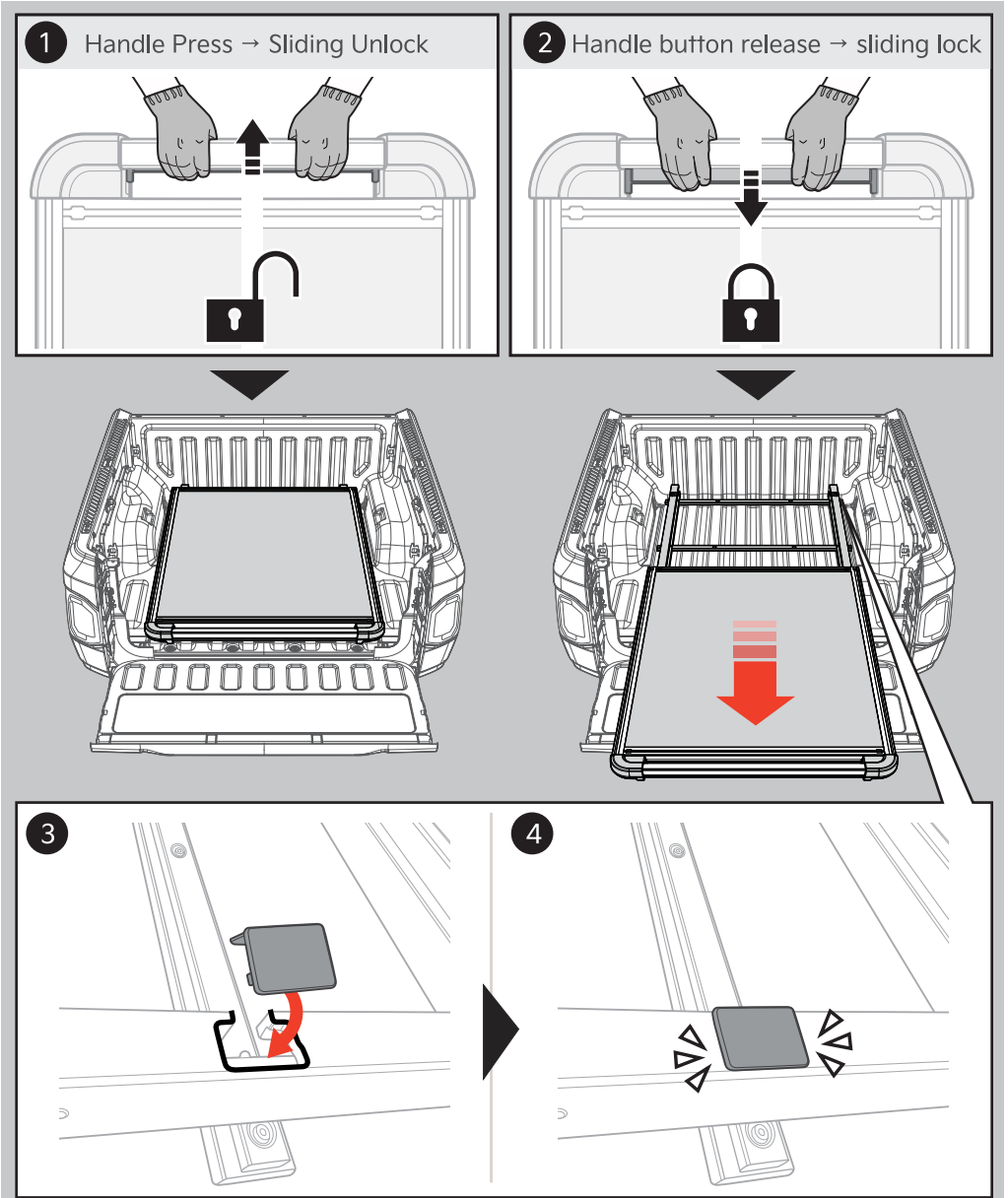
※ The reference torque value of the M8x45 bolts is 15 N·m (153 kgf·cm, 177 lbf·in).



18. Fasten the sliding cargo bed to the top of the rail.

※ Fasten the bearings of the sliding cargo bed into the inner grooves of the rail.

※ Insert the bearings on the sliding cargo bed and push forward and backward until a 'click' sound is heard.



19. Press and hold the button on the sliding cargo bed handle and pull it back and forth to check the sliding.

※ Make sure to hold the handle with both hands and operate it.

※ The lock function is activated when sliding with the button on the handle released (a total of 4 steps)

20. Press and hold the handle button to cross the locked section to reveal the bearing insertion hole inside the 'rail'; fasten the two hole caps (both sides) to the bearing insertion hole on the rail.

21. Installation is complete.

## Caution

- This product is for "Sliding Cargo Bed" only.
- Do not arbitrarily damage, modify, or transform the product.
- When using, do not apply excessive force and be careful because sharp objects may damage the product.
- When cleaning the product, wipe it with a clean cloth.
- We are not responsible for accidents, breakdowns and damages caused by consumer carelessness and negligence.

### **Matters to be marked according to safety/display standards**

Product Name: Sliding Cargo Bed

Key Specifications: Sliding Cargo Bed

Size : 1492×1104×110 (mm)

Country of production : Republic of Korea

Date of production : Box marked separately

Manufacturer : Sunil Solution

### **Product Quality Guarantee**

- Only product defects can be exchanged, and damage or damage caused by careless handling is excluded from the warranty.  
(Warranty period: 1 year from the date of purchase)